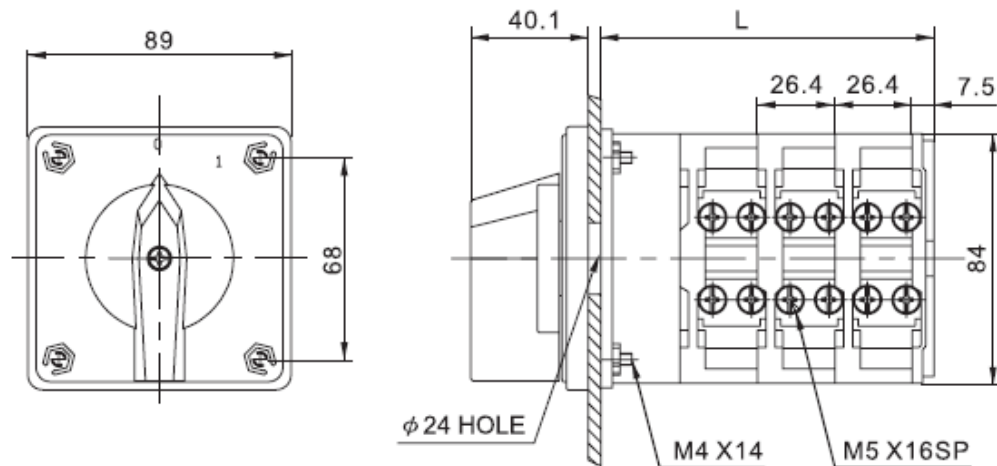


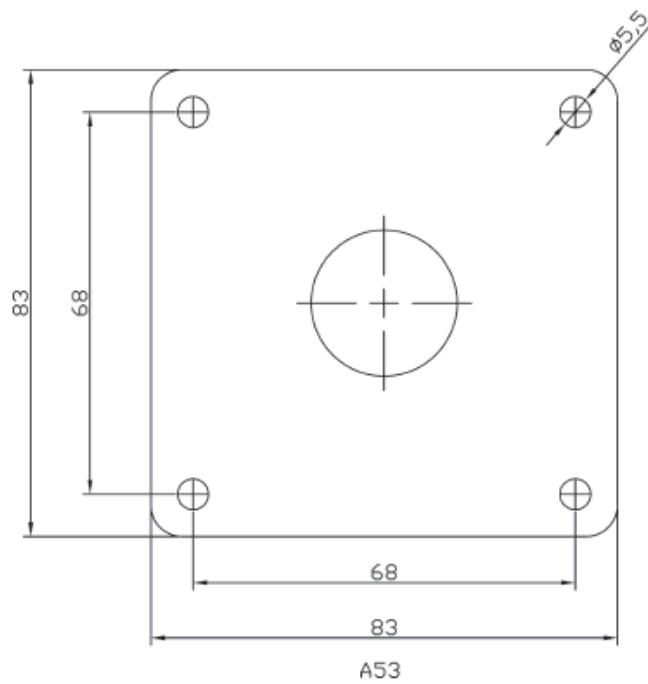
**Ratings:**

Ith: 120A, 600VAC

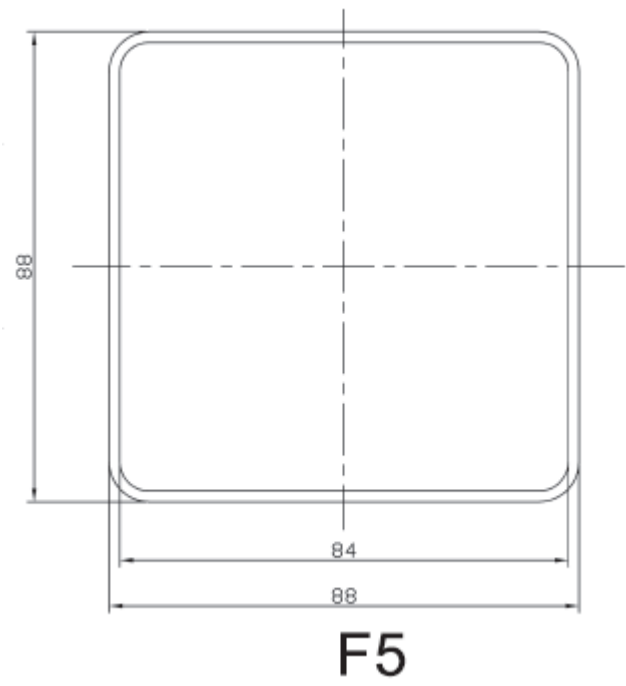
Approvals: UL, CE

**A10 Switch Dimensions:**

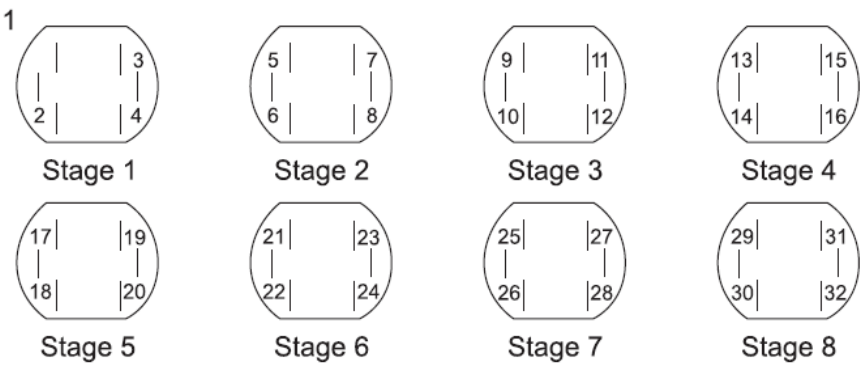
Total Number of stage	1	2	3	4	
Length L	60.7	87.10	113.5	139.90	

**Panel Mounting Dimensions:****A53**

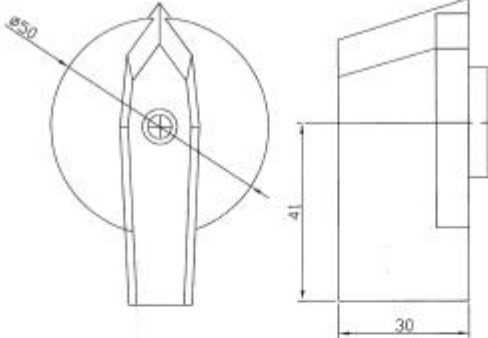

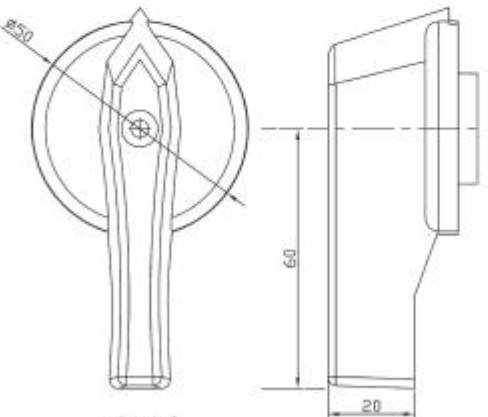

**Frame Dimensions:**



**Connecting Diagram:**



### Cam Switch Knob:

<b>K10</b>	 <p>Technical drawing of cam switch knob K10. The drawing includes a top view showing a circular base with a central hole and a side view showing the knob's profile. Dimensions are indicated: a diameter of <math>\varnothing 50</math> for the base, a height of 41, and a base width of 30. The label 100A is positioned below the drawing.</p> <p>100A</p>	 <p>Photograph of the cam switch knob K10, showing its dark, angular design and circular base.</p>
<b>K11</b>	 <p>Technical drawing of cam switch knob K11. The drawing includes a top view showing a circular base with a central hole and a side view showing the knob's profile. Dimensions are indicated: a diameter of <math>\varnothing 50</math> for the base, a height of 60, and a base width of 20. The label 100A is positioned below the drawing.</p> <p>100A</p>	 <p>Photograph of the cam switch knob K11, showing its dark, angular design and circular base.</p>