



22, 25, 30 mmφ SERIES CONTROL UNITS GENERAL INFORMATION

Rating

AC	DC
120V/6A	120V/2.2A
240V/3A	240V/1.1A
480V/1.5A	480V/0.4A
600V/1.2A	

Rated thermal current: 10A

Rated insulation voltage 600V AC/DC

NOTE: Transformer units of 110, 220, 240, or 440V 50/60HZ rating can be used on a primary voltage of 100, 200, or 400V respectively.

General Specification

Ambient temperature – 20 to +60°C

Contact resistance: 50mΩ max.

Insulation resistance: 100mΩ min.

Dielectric strength: 2500V AC 1 min (between live and dead parts),
(Full voltage units: 1000V AC, 1 min).

Mechanical life: Push button, Illuminait push button

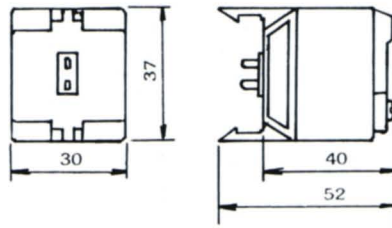
Memotary 3,000,000

Selector Sw. 500,000

Electrical life: 500,000 operating frequency 30 operation/min Duty rate 40%

Component Parts

Transformer



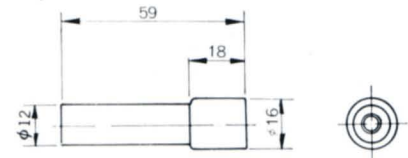
E-10 BULB
S-9 BULB

6V. 12V. 24V. 30V. 36V. 48V.
NEON : 110V 220V 380V
440V.

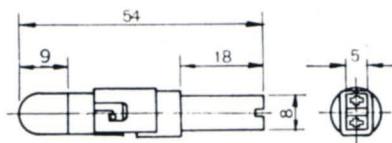
Lamp holder tool



S-9 E-10



Lamp Holder



S-9 Led lamp



Rated Voltage

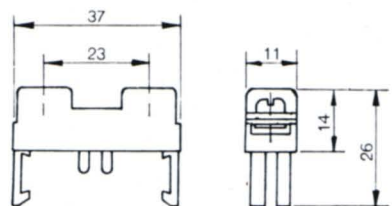
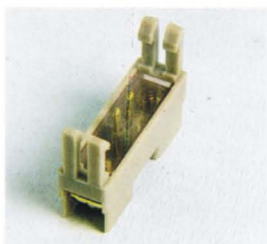
6V , 12V , 24V

110V / 120V

220V/ 240V

colour : Red , Green , Orange
Yellow , Blue , White

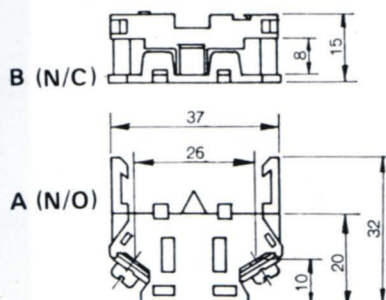
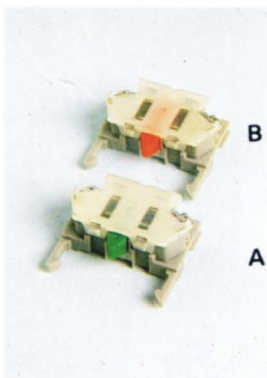
Direct adaptor



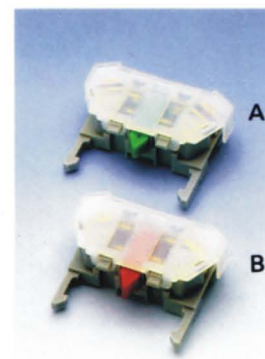
Contact block

A (N/O)

B N/C



Contact Block finger protect



A (N/O)

B (N/C)

